

Roles in the Modern World: A Controversial Embracing Gender ?ytisseceN

Description

of evolving gender norms, the concept of As society navigates the complexities as a controversial yet potentially necessary embracing traditional gender roles emerges of individual expressions and identities, path forward. While acknowledging the validity between genders and the value they bring sñicrucial to recognize the innate differences women to embrace their natural programming andto society. By encouraging men and we can foster a sense of purpose, to gender-specific roles and responsibilities, adhere Moreover, promoting understanding andstability, and harmony in our communities. from traditional roles can enrich our collectiveacceptance of those who deviate inclusive and compassionate society. Ultimately, experience and pave the way for a more diversity and preserving the essence of genderstriking a balance between acknowledging and cohesion of our increasingly complex world.differences is essential for the well-being

their perceptions of self-worth, identity, a powerful influence on individuals, shaping exert to a sense of confusion and conflict associational roles. However, they also contribute and identities within the constraints of navigate their own unique experiences individuals these rigid constructs.

the Impact of Gender Role Confusion on Society Thesis Statement: Exploring Argument for Embracing Traditional Gender Roles and the

interplay between evolving perceptions of In this article, we delve into the complex gender roles and the emergence of archetypes. We aim to explore and the development of these roles, examine the underlying factors driving the modern context, and ultimately argue for the implications of blurring gender lines in gender roles in fostering societal harmony and importance of embracing traditional individual fulfillment.

is crucial to approach the topic with a balanced As we navigate this exploration, it diverse gender identities and expressions while perspective, acknowledging the validity of between the sexes. By doing so, we can foster a also recognizing the inherent differences rich tapestry of human diversity while honoring more inclusive society that celebrates the wisdom embedded within traditional gender roles. the timeless



Gender Roles and The Emergence of

Definition and Characteristics of Roles and

of traditional and The roles represent extreme manifestations traits associated with masculinity and gender stereotypes, embodying exaggerated femininity, respectively.

attributes such as physical The archetype is characterized by hypermasculine and a focus on career success and financial strength, emotional stoicism, assertiveness, like aggression, competitiveness, and dominance, prowess. This ideal often glorifies traits like vulnerability, empathy, and nurturing while downplaying qualities

qualities such as Conversely, the archetype emphasizes hyperfeminine and an emphasis on physical appearance nurturing, emotional sensitivity, domesticity, traits like submissiveness, gentleness, beauty standards. This ideal often prioritizes and associated with assertiveness, ambition, and self-sacrifice, while marginalizing traits independence.

perpetuated through media, culture, and societal These exaggerated gender roles, on individuals, shaping their perceptions of expectations, can exert a powerful influence self-worth, identity, and societal roles.

Contributing to the Development of These Roles Factors

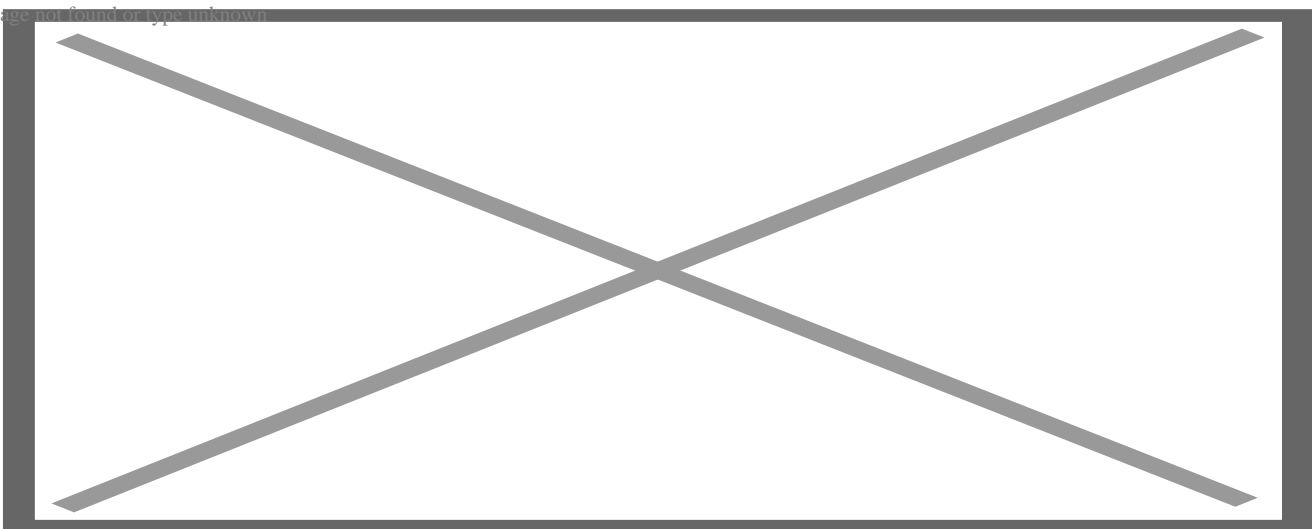
to the development and perpetuation of gender roles: Several factors contribute

1. **Media Portrayals** often reinforces traditional gender stereotypes: Popular media gender roles in movies, television shows, through depictions of exaggerated of entertainment. Characters are frequently advertising, and other forms roles, perpetuating unrealistic standards and pigeonholed into narrow gender expectations.
2. **Cultural Expectations** and cultural traditions play a significant role: Societal norms expectations for behavior and roles often deeply in shaping gender roles, with expectations can vary widely across different ingrained from childhood. These gender norms and discourage deviation cultures but frequently reinforce traditional from established roles.

3. **Socialization Processes**age, individuals are socialized into gender: From a young peers, and broader social institutions. Childrenroles through interactions with family, stereotypical gender norms in terms of clothing,are often encouraged to conform to and behaviors, reinforcing the division betweenand ēnilucsam̄toys, activities, traits. ēninimef̄
4. **Historical Context**attitudes toward gender roles have influenced: Historical traditional gender norms reflecting longstandingcontemporary perceptions, with of men and women. While societal beliefs about the roles and responsibilitiescultural of historical gender roles still persist inattitudes have evolved over time, vestiges modern society.
5. **Economic Factors**factors, such as labor market dynamics and: Economic also shape gender roles by influencing patternshousehold income distribution, can labor, and financial independence. Economicof employment, division of household traditional gender roles, with men oftendisparities between genders can reinforce and women relegated to domestic roles.expected to be primary breadwinners

social, ērebūOverall, the development ofgender roles is a complex interplay of cultural, rigid stereotypes that limit individualeconomic, and historical factors, perpetuating inequality. Recognizing and challenging theseexpression and contribute to gender a more inclusive and equitable society.stereotypes is essential for fostering

Image not found or type unknown



Gender Differences in the Modern Context

Gender Differences Are Becoming Less Distinct

In recent years, traditional gender differences have shown signs of blurring as society becomes more inclusive and progressive. The rigid boundaries that once delineated behaviors, interests, and roles based on gender are gradually dissolving, giving rise to more fluid and nuanced understanding of gender identity and expression.

Historically, traditional gender roles dictated that men were expected to be assertive, competitive, and career-focused, while women were expected to be nurturing, empathetic, and family-oriented. However, as societal attitudes evolve and gender norms shift, these distinctions are becoming less rigid and more permeable.

Contributing to the Blurring of Gender Lines

Several factors contribute to the blurring of gender lines in the modern context:

1. **Advancements in Gender Equality:** Increased advocacy for gender equality has led to greater awareness and acceptance of diverse gender identities and expressions. Movements such as feminism and +LGBTQ rights have challenged traditional gender norms and paved the way for greater freedom of self-expression.
2. **Changing Social Norms:** Shifting social norms and cultural attitudes have contributed to a more inclusive understanding of gender roles. As society becomes more diverse and multicultural, traditional gender stereotypes are being challenged and reevaluated, allowing individuals greater flexibility in expressing their gender identity.
3. **Education and Awareness:** Increased education and awareness surrounding gender diversity have played a crucial role in challenging traditional gender norms. Schools, universities, and community organizations are incorporating discussions on gender identity and sexuality into their curricula, fostering greater understanding and acceptance of diverse gender expressions.
4. **Media Representation:** The media plays a significant role in shaping societal attitudes: The media

Increasingly, media representation is perceptions of gender roles and identities. gender identities and expressions, challenging reflecting a broader spectrum of stereotypes and promoting inclusivity. traditional

5. **Economic Changes** such as the rise of dual-income households: Economic shifts, have altered traditional gender roles within and changes in labor market dynamics, are increasingly participating in the workforce, the family and the workplace. Women of male breadwinning and female domesticity. challenging traditional notions

of Gender Overlap in Various Aspects of Society C. Examples

can be observed in various aspects of society: Gender overlap

1. **Occupational Diversity** gender barriers in the workforce are breaking: Traditional careers across a wide range of industries and down, with men and women pursuing by one gender, such as nursing or engineering, professions. Fields once dominated are becoming increasingly diverse.
2. **Parental Roles** and childcare responsibilities is becoming: The division of household and women sharing parenting duties and household more equitable, with both men more active roles in caregiving, challenging the chores. Fathers are taking on of the primary caregiver as exclusively female. stereotype
3. **Fashion and Style** trends are becoming more gender-neutral, with: Fashion that cater to a diverse range of body types clothing brands offering inclusive options is gaining popularity, allowing individuals and gender identities. Gender-fluid fashion without conforming to traditional gender norms. to express themselves authentically
4. **Hobbies and Interests** gender stereotypes regarding hobbies and: Traditional individuals freely pursuing activities based on interests are being challenged, with than societal expectations. Men and women are personal preference rather activities, blurring the lines between participating in a broader range of recreational and traditionally pursuits.

a broader cultural shift towards inclusivity Overall, the blurring of gender lines reflects

and expressions. While traditional gender and acceptance of diverse gender identities contexts, the increasing recognition of gender differences may still persist in some a more inclusive and equitable society. is reshaping societal norms and fostering diversity



The Role of Biology and Nature

of the Biological Basis of Gender Differences Examination

sexes have long been recognized as a fundamental Biological differences between the differences in reproductive anatomy to hormonal aspect of human existence. From significant role in shaping gender differences. influences on behavior, biology plays a

level, chromosomal differences determine a sex, with XX chromosomes for females and XY chromosomes with males. These chromosomes typically associated with in hormonal profiles, with testosterone chromosomal differences lead to variations females. These hormonal differences contribute predominately in males and estrogen in between the sexes, such as muscle mass, fat distribution and behavioral distinctions and patterns of aggression and nurturance.

that there are inherent differences in brain Neurobiological research also suggests females. While the extent and significance of structure and function between males and studies have shown variations in brain anatomy, these differences are still debated, that may underlie differences in cognitive connectivity, and neurotransmitter activity emotional processing, and social behavior.

and Embracing Innate Differences Between The Importance of Understanding Sexes

differences between sexes is essential for Understanding and embracing the innate cooperation between individuals. By recognizing and fostering mutual respect, empathy, and

to diverse perspectives and experiences, we can that biological differences contribute challenges that each gender brings to the table. appreciate the unique strengths and also allows for more effective communication and Embracing these differences relationships. Rather than viewing gender as a collaboration in personal and professional the complementary qualities of each gender barrier or limitation, recognizing and valuing in problem-solving and decision-making. can lead to greater synergy and creativity between sexes can help mitigate harmful. Moreover, acknowledging innate differences gender inequality. By challenging rigid gender stereotypes and biases that perpetuate a more inclusive and equitable society that norms and expectations, we can create celebrates the full spectrum of human diversity.

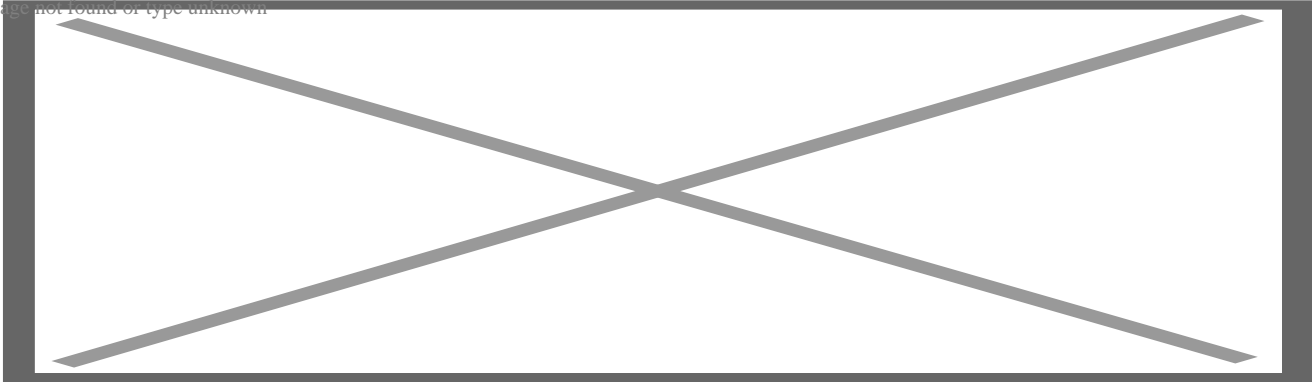
of Traditional Gender Roles Based on Biological Arguments for the Preservation Predispositions

in biological predispositions to some extent, While traditional gender roles may be rooted are not immutable or universally applicable. it is essential to recognize that they do not dictate specific roles or behaviors but Biological differences between the sexes range of individual experiences and expressions. rather contribute to a diverse gender roles based solely on biological Arguments for the preservation of traditional of human behavior and the diversity of gender predispositions overlook the complexity fail to account for the ways in which societal identities and expressions. They also roles and limit individual freedom and self-expectations and cultural norms shape gender expression.

gender roles, society should strive to create. Instead of rigidly adhering to traditional to explore and express their gender identity environments that allow individuals stereotypes, promoting gender equality, and authentically. This involves challenging their interests and aspirations without fear creating opportunities for individuals to pursue of judgment or discrimination.

aspects of gender differences, it is crucial. Ultimately, while biology may influence certain multifaceted and influenced by a wide range of to recognize that human behavior is environmental influences. By embracing diversity factors, including social, cultural, and a more equitable and harmonious society for all and promoting inclusivity, we can create individuals, regardless of gender.

Image not found or type unknown



The Case for Embracing Traditional Gender Roles

Adherence to Gender-Specific Roles and Arguments in Favor of Encouraging Responsibilities

1. **Social Cohesion** roles provide a sense of stability and cohesion: Traditional gender for behavior and expectations. Adhering to within society by offering clear guidelines of belonging and identity, creating a shared these roles can foster a sense understanding of societal norms and values.
2. **Family Dynamics** gender roles often dictate distinct roles and: Traditional unit, with men typically serving as breadwinners responsibilities within the family division of labor can promote efficiency and and women as caregivers. This to focus on their respective strengths and specialization, allowing each partner to the overall well-being of the family. contribute
3. **Psychological Comfort** individuals, conforming to traditional gender: For some comfort and security. Following familiar roles can provide a sense of psychological may alleviate feelings of uncertainty or anxiety societal norms and expectations deviating from established patterns of behavior. associated with

of Embracing Traditional Gender Roles for Discussion on the Benefits Individuals and Society

1. **Sense of Purpose** gender roles can provide individuals with: Embracing traditional by aligning their behavior with societal a sense of purpose and fulfillment

satisfaction from fulfilling their role as expectations. For example, men may derive women may find fulfillment in nurturing and providers and protectors, while caregiving roles.

2. **Social Stability** contribute to social stability by providing a: Traditional gender roles relationships and societal institutions. When framework for organizing interpersonal gender norms, it can facilitate smoother individuals adhere to established cooperation within communities and institutions. interactions and
3. **Cultural Continuity** gender roles are often deeply rooted in cultural: Traditional to the past and a source of continuity across traditions and customs, serving as a link can help preserve cultural heritage and promote generations. Embracing these roles identity. sense a sense of connection to cultural

to Traditional Roles Can Still Coexist Without Exploration of How Exceptions Undermining Their Importance

1. **Flexibility and Adaptability** traditional gender roles provide a foundation: While not be seen as rigid or immutable. Society for social organization, they should must also adapt to changing circumstances and evolves over time, and gender roles allow for greater flexibility and adaptability, values. Exceptions to traditional roles non-traditional paths without facing stigma or enabling individuals to pursue discrimination.
2. **Individual Agency** the freedom to choose their own paths,: Allowing individuals them to pursue their passions and aspirations regardless of gender, empowers roles may offer guidance, individuals should authentically. While traditional gender that align with their values and preferences, have the autonomy to make choices they conform to traditional norms or not. whether
3. **Equality and Inclusivity** Embracing exceptions to traditional gender roles: by challenging stereotypes and breaking promotes gender equality and inclusivity Recognizing and valuing the contributions of down barriers to opportunity. a more equitable and diverse society where individuals regardless of gender fosters

can impact social institutions and structures. Moreover, the blurring of gender roles and educational systems. As individuals including family dynamics, workplace cultures, expectations, it can lead to shifts in how these challenge traditional gender norms and uphold, necessitating adaptation and change to institutions operate and the values they diverse gender identities and expressions accommodate

Surrounding Gender Roles Can Lead to Social Discussion on How Confusion Unrest and Identity Crises

to social unrest and identity crises as surrounding gender roles can contribute Confusion expectations and personal experiences. When individuals grapple with conflicting societal or invalidated, it can create a sense of traditional gender norms are challenged society. sēno uncertainty and insecurity about identity and place in

not conform to traditional gender roles may face For example, individuals who do leading to feelings of alienation and isolation. discrimination, stigma, and marginalization, issues such as anxiety, depression, and identity This can manifest in mental health their internal sense of gender identity with disorders as individuals struggle to reconcile external societal expectations.

gender roles can exacerbate existing social Furthermore, confusion surrounding for marginalized communities. Gender-based inequalities and tensions, particularly of oppression, such as racism, classism, and discrimination intersects with other forms of discrimination and marginalization. ableism, leading to compounded experiences

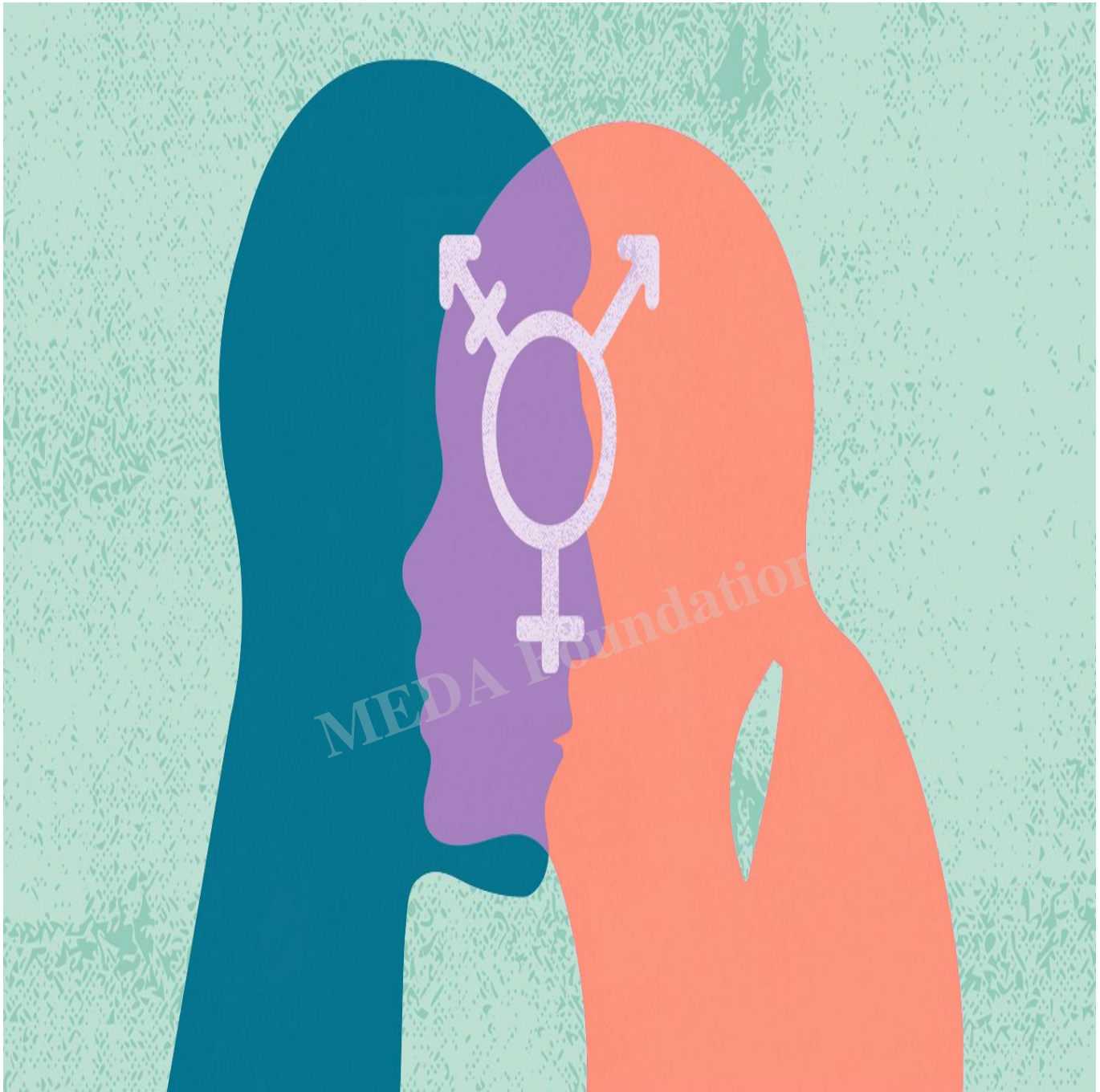
Real-World Consequences of Gender Role Confusion Examples of

1. **Workplace Discrimination** role confusion can contribute to workplace: Gender facing barriers to career advancement and equal discrimination, with individuals identity or expression. Transgender individuals, opportunities based on their gender discrimination and harassment in the workplace. in particular, may face heightened
- 2.

Healthcare Disparities Gender role confusion can also impact access to: healthcare with individuals facing barriers to receiving services and resources, gender-affirming support. Transgender individuals may encounter care and challenges accessing hormones or surgeries due to medical gender-affirming gatekeeping and discrimination within healthcare systems.

3. **Legal Challenges** can present legal challenges, particularly: Gender role confusion immigration, and criminal justice. Transgender in areas such as family law, legal recognition of their gender identity, individuals may face difficulties obtaining housing, employment, and access to social leading to issues with documentation, services.

have profound societal implications, affecting In conclusion, gender role confusion can crises, and various aspects of and contributing to social unrest, identity lives to recognize and address these challenges inequalities. It is essential for society systemic reforms to create a more inclusive and equitable through education, advocacy, and policy regardless of gender identity or expression. world for all individuals,



Conclusion

the Evolving Perceptions of Gender Roles Recap of Key Points Regarding

we have witnessed the evolution of societal norms from rigid, traditional gender roles to a more fluid understanding of gender identity and expression. The emergence of gender roles reflects exaggerated stereotypes shaping their perceptions of self-worth that can exert a powerful influence on individuals, that also observed the blurring of traditional gender and societal roles. However, we have

as advocacy for gender equality, changing social differences, driven by factors such and increased awareness of gender diversity norms,

for Embracing Traditional Gender Roles in the Restatement of the Argument Modern World

diversity and inclusion, it is crucial to While recognizing the importance of embracing roles in providing stability, cohesion, and acknowledge the value of traditional gender gender roles offer a sense of purpose and cultural continuity within society. Traditional a framework for organizing interpersonal fulfillment for many individuals, providing By embracing these roles, we can promote social relationships and societal institutions. and a sense of belonging within communities. stability, cultural continuity,

and Appreciate the Importance of Gender Call to Action for Society to Recognize Acceptance and Understanding for Individuals Differences While Promoting Who Do Not Fit Traditional Molds

to recognize and appreciate the importance As we move forward, it is essential for society acceptance and understanding for individuals who of gender differences while promoting challenging stereotypes, promoting gender do not fit traditional molds. This involves for individuals to pursue their interests and equality, and creating opportunities culture of inclusivity, empathy, and respect, we aspirations authentically. By fostering a society where everyone has the opportunity can create a more equitable and harmonious or expression. It is through embracing diversity to thrive, regardless of gender identity experience that we can build a brighter and more and celebrating the richness of human inclusive future for all.

MEDA Foundation, an organization committed to Reaching out to you on behalf of the through sustainable economic development empowering communities and individuals in helping us create lasting change and improve initiatives. Your support is vital your donation, we can provide access to vital livelihoods around the world. With for smallholder farmers, entrepreneurs, and resources, education, and training programs contribution will directly impact the lives of individuals striving to build better lives. Your cycle of poverty and build a brighter future. those in need, enabling them to break the to the MEDA Foundation and for joining us in our Thank you for considering a donation change and empower communities globally. mission to create positive

CATEGORY

1. Happy & Simple Living

2. Psychology

POST TAG

1. #Acceptance
2. #Controversy
3. #GenderDifferences
4. #GenderIdentity
5. #GenderRoles
6. #Identity
7. #Inclusion
8. #MEDA
9. #MedaFoundation
10. #SocialNorms
11. #SocietalImpact
12. #TraditionalValues

Category

1. Happy & Simple Living
2. Psychology

Tags

1. #Acceptance
2. #Controversy
3. #GenderDifferences
4. #GenderIdentity
5. #GenderRoles
6. #Identity
7. #Inclusion
8. #MEDA
9. #MedaFoundation
10. #SocialNorms
11. #SocietalImpact
12. #TraditionalValues

Date

2025/04/07

Date Created

2024/04/11

Author

yukying-so

MEDA Foundation