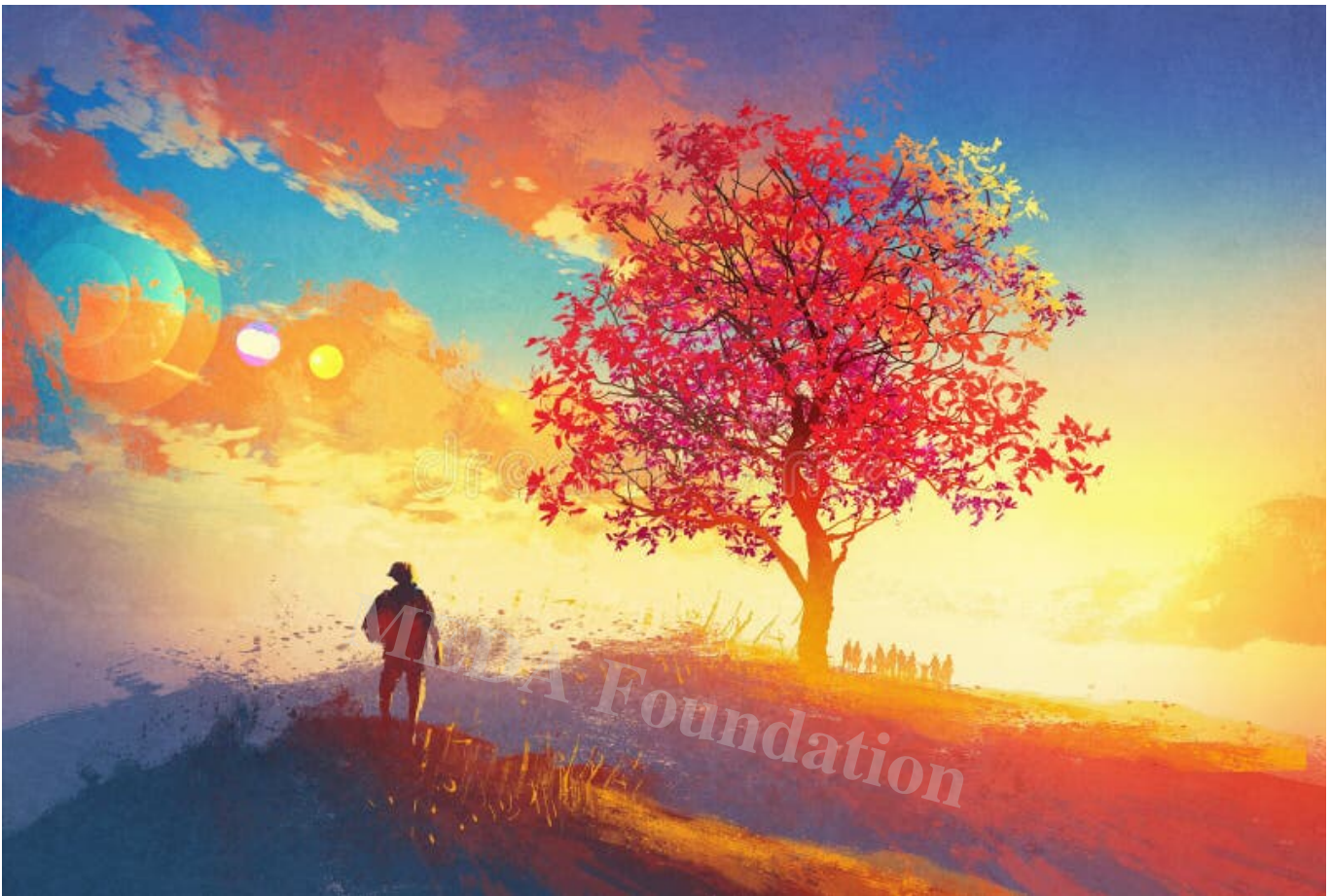




## Alone by Nature: The Inner World of the Deeply Intelligent

### Description

Intelligent minds often gravitate toward solitude not out of social ineptitude, but as a means to preserve mental energy, foster deep thinking, and cultivate creative clarity. Philosophers like Schopenhauer and Nietzsche critiqued societal norms, highlighting how the superficiality of social interactions can stifle intellectual growth. Solitude becomes a sanctuary where these individuals can escape the noise, engage in meaningful self-reflection, and experience true freedom of thought. However, while solitude is essential for creativity and focus, prolonged isolation can lead to feelings of alienation, cynicism, and mental health struggles. The key lies in balancing solitude with authentic social engagement, forging meaningful connections that nurture intellectual growth while safeguarding against the dangers of loneliness and despair.



**The Solitary Genius: Why Intelligent Minds Often Prefer Solitude**

# I. Introduction: Solitude and the Intelligent Mind

In a world that glorifies connection, applause, and social validation, solitude often bears a suspicious reputation. We are encouraged to be *seen*, to be *liked*, to be *networked*—as if constant interaction is a proxy for value. And yet, the pages of history whisper a different truth: **many of the greatest minds to have shaped our civilization preferred the quiet company of their own thoughts over the bustle of society.**

From **Nikola Tesla**, who dined alone and wandered city streets in meditative reflection, to **Isaac Newton**, whose most groundbreaking work was done during a plague-induced retreat from university life—brilliance seems to walk hand-in-hand with solitude. **Emily Dickinson**, who famously wrote her hauntingly precise poetry from within the confines of her home; **Friedrich Nietzsche**, whose thunderous insights were forged in the silence of

---

Alpine walks; **Arthur Schopenhauer**, who regarded social life as a distraction for lesser minds; **Blaise Pascal**, whose philosophical clarity emerged from deliberate seclusion; and even **Albert Einstein**, who once remarked, *“I live in that solitude which is painful in youth, but delicious in the years of maturity.”*

These individuals were not misanthropes. They were not social failures. They were seekers—people for whom conventional interaction could not offer the richness their minds demanded. And therein lies the paradox that forms the heart of this inquiry:

**Society celebrates genius, but misunderstands the solitude that often enables it.**

## Purpose & Intended Audience

This article is written for **students, educators, psychologists, creatives, philosophers, and anyone who has felt out of place in crowds**. It addresses those who wonder why they tire after small talk, why they crave meaning while surrounded by chatter, and why they feel more energized after a day of thinking than a night of socializing. If you’ve ever felt alone in a room full of people—not for lack of company, but for lack of *resonance*—this article is for you.

You are not broken. You are not antisocial. You are perhaps simply wired for deeper wavelengths.

## Key Messages & Conclusion First

Let’s begin where many articles end:

- 1. Solitude is not a flaw but a feature in the lives of many intelligent people.**  
It is often a *chosen environment* that enables clarity, creativity, reflection, and growth.
- 2. This solitude is not about avoidance but about alignment.**  
It arises not from disdain for others, but from an inability to thrive in environments that lack depth, authenticity, or challenge.
- 3. However, unchecked solitude can tip into unhealthy isolation.**  
The same reflective distance that sharpens insight can, if unbalanced, breed loneliness, depression, and nihilism.

---

The journey of the solitary genius is not a call to retreat from the world, but a **recalibration** of how to engage with it meaningfully—on one's own terms.

## Solitude vs. Loneliness: A Crucial Distinction

Before we go further, let us clarify a vital difference that society often blurs:

- **Solitude** is chosen. It is generative. It is the quiet that allows thought to bloom and the self to speak. It is the realm of meditation, creation, and clarity.
- **Loneliness** is imposed. It is a deficit, an ache, a form of emotional starvation. It isolates not just from people but from connection, meaning, and hope.

### Solitude is a sanctuary. Loneliness is an exile.

And though they may look similar on the outside—quiet rooms, long walks, closed doors—their internal experiences couldn't be more different.

The intelligent person often seeks the former, yet must guard carefully against slipping into the latter.

## What and Why: Setting the Inquiry

So why do brilliant minds so often find **society draining** and **solitude enriching**?

We will explore this question through five lenses:

1. **Philosophical Orientation:** How thinkers like Schopenhauer and Nietzsche justify withdrawal from the crowd.
2. **Social Dissonance:** How intelligent individuals feel "out of tune" with mainstream conversations and expectations.
3. **Mental Energy Conservation:** How overstimulation and shallow engagement deplete cognitive resources.
4. **Craving for Depth:** How the hunger for meaningful exchange is rarely satisfied in casual company.
5. **Creative and Intellectual Pursuits:** Why solitude provides the stillness necessary for complex, original thought.

By unpacking these dynamics, we aim not just to understand a pattern, but to **affirm a way of being** that has long been misunderstood.

This is not merely an intellectual exploration. It is a gentle invitation:

To stop apologizing for your silence.

To stop pathologizing your preference for alone time.

To reclaim solitude as sacred, not suspect.

In the sections that follow, we will navigate the tension between brilliance and belonging, detachment and engagement, stillness and stimulation. And perhaps, in doing so, offer a clearer lens through which to view your own inner landscape.



## II. The Philosophical Foundations: Why Thinkers Distrust the Crowd

At the root of many intelligent individuals' preference for solitude lies not merely introversion or social fatigue, but a **deep philosophical orientation**—a worldview that sees society not as nourishing, but as a **veiled theatre of illusions**, where depth is diluted, and truth is often silenced. From the brooding pessimism of Schopenhauer to the rebellious ideals of Nietzsche, and the contemplative paths of the East, a common thread runs through centuries of thought:

**To truly see the world, one must step away from its performance.**

## 1. Arthur Schopenhauer: Solitude as the Shelter of the Elevated Mind

Few thinkers have described the solitary condition of the intellectual with such unflinching clarity as **Arthur Schopenhauer**, the 19th-century philosopher of pessimism. For Schopenhauer, solitude was not just a preference—it was the **inevitable consequence of perceiving the world as it truly is**.

“The more unintelligent a man is, the less mysterious existence seems to him.”  
Schopenhauer

In his view, **society is an elaborate illusion**—a stage play performed by people desperate to avoid boredom, truth, and self-awareness. Most human interactions, he believed, are shallow ego-games, structured not around truth but around status, distraction, and vanity.

- **Ordinary conversation**, to him, was mere “mental noise”—a dull exchange of clichés and posturing, devoid of intellectual stimulation.
- The **truly intelligent individual**, he posited, is burdened with an acute perception of this hollowness. He sees behind the mask—and can no longer enjoy the party.
- Thus, **solitude becomes both a curse and a sanctuary**:  
a **curse**, because one must bear the burden of seeing too much;  
a **sanctuary**, because it’s the only place one can think freely.

Schopenhauer didn’t romanticize solitude. He acknowledged its weight. But he saw it as the necessary habitat for greatness—a **mark of inner wealth, not of misanthropy**.

## 2. Nietzsche’s Herd Morality and the Burden of Conformity

Where Schopenhauer was a pessimist, **Friedrich Nietzsche** was a firebrand—less melancholic, more defiant. Yet he, too, distrusted the crowd.

For Nietzsche, society was governed by **“herd morality”**—a value system that promotes safety, mediocrity, and conformity at the expense of truth, danger, and greatness.

“The individual has always had to struggle to keep from being overwhelmed by the tribe.”

â??Nietzsche

He contrasts two archetypes:

- The **â??last manâ??** , who chooses comfort, approval, and samenessâ??soulless, riskless, unimaginative.
- The **â??Übermenschâ??** (Overman), who creates his own values, who dares to live authentically, even if that means standing alone.

For Nietzsche, to be free in mind and spirit requires a **deliberate withdrawal from the crowd**. Not out of arrogance, but out of **a refusal to be colonized by banality**.

Detachment is not an act of disdain, but an act of *devotion*â??to truth, to creation, to inner coherence.

Nietzscheâ??s solitary thinker is not merely antisocialâ??he is on a quest, a **self-overcoming**. He must walk alone, because the herd will not follow where he is going.

### 3. Eastern Parallels: Silence as Spiritual Practice

The East offers a more gentle, yet equally profound articulation of the value of solitude.

- **Siddhartha Gautama**, the Buddha, left behind palace life to sit in silence under the Bodhi treeâ??not because he hated the world, but because he saw through its illusions. His solitude was not a retreat, but a **recalibration of the soul**.
- **Taoist sages** often lived in mountains or wandered alone through nature. They viewed the social world as artificial and corrupting.

â??When the great Tao is forgotten, kindness and morality arise.â??

â??Tao Te Ching

These traditions emphasize **non-conformity, stillness, and the shedding of ego**. They offer a refreshing reminder: **solitude is not just philosophicalâ??it is spiritual**. It is a path to **clarity, humility, and alignment with the deeper order of existence**.

In these worldviews, solitude is not a void, but a fullnessâ??the place where one finally meets what is real.

### 4. Modern Echoes: Psychology and Solitude

Modern thinkers, too, have echoed this ancient wisdom.

- **Aldous Huxley** remarked,

“The more powerful and original a mind, the more it will incline towards the religion of solitude.”

For him, solitude was not withdrawal, but elevation—a discipline that fosters insight and moral clarity.

- **Erich Fromm**, the humanistic psychoanalyst, wrote about **being vs. having**—arguing that modern society pushes us to consume rather than to reflect. Solitude, he believed, was necessary for reclaiming our authentic self.
- **Carl Jung** introduced the concept of **individuation**—the lifelong journey of becoming whole. This journey, he insisted, requires periods of retreat, silence, and self-confrontation.

“Who looks outside, dreams. Who looks inside, awakens.”

Jung

In their own way, these thinkers continue the legacy of Schopenhauer and Nietzsche: they see society as a seduction, and solitude as a sacred counterweight—a way to reclaim what matters in a world that often forgets.

## The Solitary Mind Is Not a Broken One

Throughout history and across cultures, great minds have turned away from the crowd not because they couldn't belong, but because they **chose not to betray themselves in the pursuit of belonging**.

Solitude is not a glitch in the system of intelligence. It is a *signal*—a natural response to a world that often operates on a different wavelength. The intelligent person does not flee society out of spite, but because their inner compass demands **truth over comfort, depth over popularity, and authenticity over performance**.

To walk alone is not to be lost.

It may simply mean you're headed where few dare to go.



## III. The Psychological Landscape: Why Smart Minds Withdraw

### Conclusion First:

Intelligent individuals often retreat into solitude not due to dysfunction or elitism, but because typical social environments fail to provide the cognitive and emotional conditions they need to thrive. **Superficiality, overstimulation, and inauthenticity** make ordinary interactions feel like psychological burdens rather than meaningful connections. Withdrawal, in this context, becomes an act of **self-preservation**, not alienation.

### Why this matters:

To better support intelligent individuals—be they students, creatives, thinkers, or introverts—we must understand the psychological cost of social performance and the inner necessity for depth and solitude. In doing so, society can move from pathologizing solitude to **recognizing it as a valid, even vital, mode of being**.

### 1. Superficiality Fatigue: The Toll of Shallow Engagements

---

One of the most immediate psychological reasons highly intelligent people withdraw is their **low tolerance for triviality**.

- **Small talk**, to many, feels not just boring but **intellectually suffocating**. Questions like “What do you do?” or “How’s the weather?” often feel hollow, scripted, and uninviting to those seeking real conversation.
- The intelligent mind tends to **seek meaning, patterns, and insight**—not just exchange pleasantries.
- Consequently, **social gatherings become emotionally and cognitively draining**, especially when interactions remain surface-level or groupthink dominates.

This phenomenon is known informally as **“superficiality fatigue”**—a kind of existential weariness with the shallow rituals of social interaction. Over time, it fosters avoidance. Not because others are unworthy, but because **the intelligent mind yearns for depth like the body yearns for oxygen**.

## 2. Cognitive Overstimulation: When the Mind Doesn’t Switch Off

Another key driver of withdrawal is the **overactive, constantly-processing mind**.

Highly intelligent people often display:

- **Heightened sensitivity to nuance**—they notice contradictions, tone shifts, and inconsistencies others miss.
- **A relentless internal dialogue**—they’re constantly analyzing, interpreting, and making connections.
- In chaotic or noisy environments, this **leads to overstimulation**—they’re not just hearing what’s said; they’re processing it *while* predicting subtext, assessing meaning, and reflecting on implications.

This cognitive multitasking may result in what psychologists call **“analysis paralysis”** or **social hangovers**—aftereffects of mental exhaustion following intense or prolonged social interaction.

Thus, solitude becomes necessary for **mental decompression**. Just as muscles need rest after exertion, **the intelligent mind needs silence to recalibrate**.

## 3. Craving Depth & Intellectual Stimulation: A Hunger Few Understand

The smart mind is often defined by its **deep curiosity**—an insatiable appetite for exploration, synthesis, and meaning.

- **Complexity, ambiguity, and nuanced thought** are not threats—they're home turf.
- But the **social sphere tends to reward simplicity**, certainty, and brevity.
- Conversations are often shallow not by malice, but by design—they cater to the average, the shared, the accessible.

This mismatch creates what we might call a **cognitive malnutrition**—intelligent individuals can spend hours in social settings and come away **mentally starved**, having not once engaged in the kind of thought or dialogue that nourishes them.

As a result, **books, ideas, introspection, and writing** often replace socializing—not as an escape, but as a return to **intellectual authenticity**.

#### 4. Authenticity vs. Social Performance: The Cost of Wearing Masks

Lastly, many intelligent individuals struggle with the **psychological cost of playing normal**.

- Social life, particularly in group settings, demands **performance**—cheerful tones, polite agreement, enthusiastic engagement.
- But high-intelligence individuals are often **highly self-aware**. They recognize when they're being inauthentic—and that awareness eats away at them.
- Over time, **social settings begin to feel like theater**, and they, unwilling actors.

This is not arrogance. It is often a **moral discomfort**—a refusal to wear the mask simply to fit in.

I'd rather be disliked for who I am than liked for who I'm not.

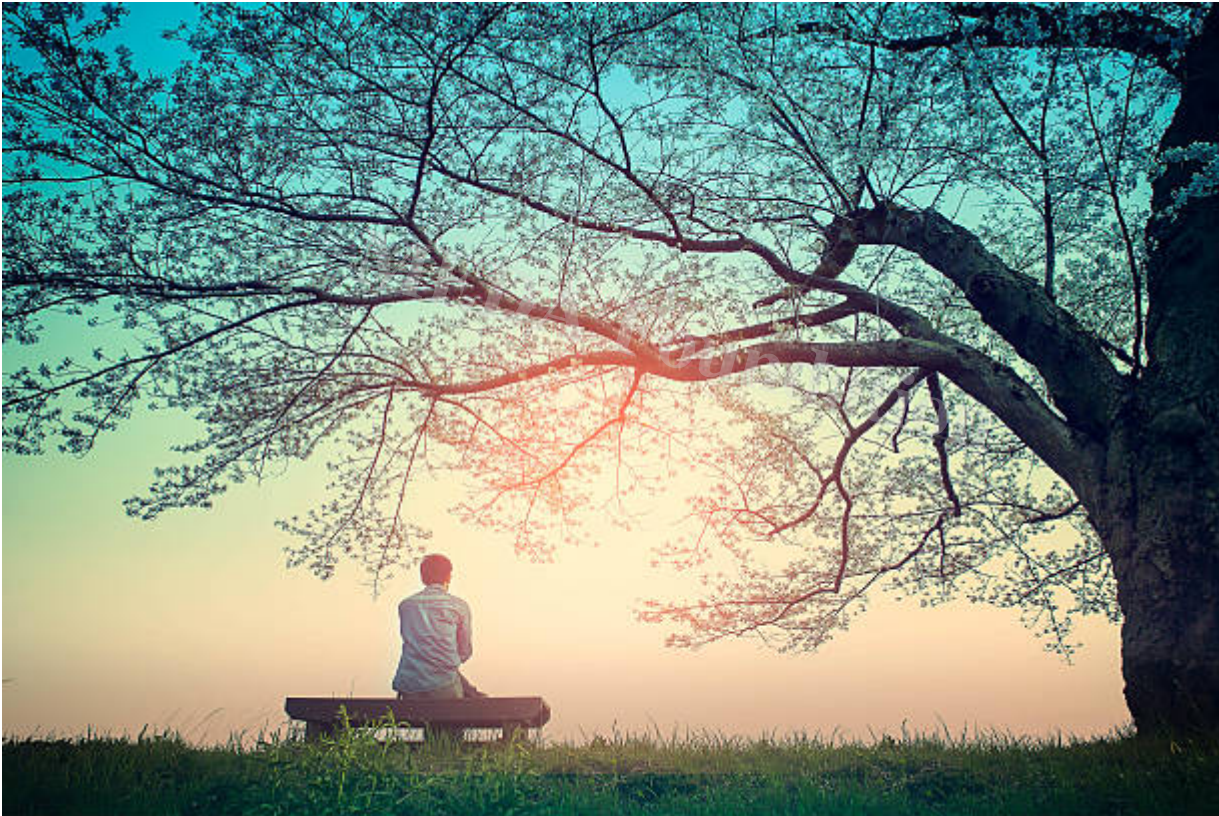
The result? Withdrawal, yes—but also **peace**. In solitude, they can be **authentically themselves**, with no audience, no script, and no pressure to dilute.

#### Withdrawal as Wisdom

When intelligent individuals withdraw from social settings, it's not always a red flag—it may be a **healthy adaptation** to a world that often misunderstands them.

- They seek silence, not because they hate noise, but because they hear *too much* in it.
- They crave solitude, not because they dislike people, but because they **value truth, meaning, and clarity more** than approval.

In recognizing this, we open the door to more inclusive environments—places where **deep thinkers can connect without compromise**, and where **solitude is honored as strength**, not punished as strangeness.



## IV. Society's Uncomfortable Relationship with Intelligence

### Conclusion First:

Society has always maintained an uneasy, often adversarial, relationship with intelligence—especially when it comes in nonconforming, uncompromising, or eccentric forms. The intelligent individual faces a deep paradox: *to be truly oneself is to risk social rejection, yet to conform is to betray one's essence*. Thus, many gifted minds find themselves stuck between authenticity and alienation.

## Why this matters:

Understanding society's bias against intellectual difference is not just about compassion—it's about survival. A society that misunderstands, marginalizes, or suppresses its most thoughtful members risks intellectual stagnation, moral regression, and cultural mediocrity. It is **imperative we learn to live with intelligence—not just tolerate it, but celebrate and engage with it.**

## 1. Social Rejection and Misunderstanding: The Cost of Standing Out

Highly intelligent individuals are often misread—not because they are unclear, but because society lacks the lens to see them properly.

- Their insights are seen as **criticism**, their clarity mistaken for **arrogance**.
- Emotional detachment or contemplative nature is interpreted as **coldness**, not depth.
- In group settings, their intensity, focus, or unconventional thinking may **disrupt social harmony**, triggering unease or even hostility.

This isn't just anecdotal—it's psychological. Studies in **social cognition** show that people tend to distrust what they don't understand. Intelligence that **doesn't conform to social scripts**—that questions, challenges, or remains indifferent—becomes a social threat.

Thus, the intelligent individual is often **punished for authenticity**, while superficial charisma is rewarded.

## 2. The Pressure to Conform: Dimming the Light to Fit the Room

To be accepted, many brilliant minds learn to **mask**—to dilute their language, censor their thoughts, and **hide their intensity**.

- The world prizes **relatability** over truth, **pleasantry over precision**.
- Many gifted individuals, especially in their formative years, internalize this pressure and **downplay their gifts to fit in**.
- Schools and workplaces often celebrate conformity disguised as "teamwork" and penalize **intellectual independence**.

This tension causes what psychologists call **existential dissonance**: the persistent sense that one must **suppress one's nature to be socially viable**.

---

To be intelligent is often to be *invisible or in trouble*—unless one learns the art of translation: how to turn profound thoughts into palatable soundbites.

### 3. The Historical Marginalization of Genius: Brilliance in Exile

History is a graveyard of misunderstood minds.

- **Socrates** was executed for corrupting the youth—with questions.
- **Galileo** was exiled for observing facts that contradicted power.
- **Van Gogh** died uncelebrated, having sold one painting.
- **Tesla** died alone in a hotel room, while others profited from his vision.

In every era, the pattern repeats: **visionaries are rejected in real-time and romanticized only posthumously**. Why? Because genius often threatens comfort zones. It **disrupts norms, challenges power, and exposes illusions**.

Society, slow-moving and consensus-driven, often **embraces innovation only after the innovator is gone**. The genius becomes a legend only when it's safe to do so.

### 4. The Hedgehog's Dilemma: The Lonely Togetherness of Brilliant Minds

Borrowing from **Schopenhauer's parable**, the hedgehog's dilemma describes a tragic irony:

Hedgehogs huddle for warmth, but their sharp spines hurt each other. So, they must choose between pain and isolation.

Intelligent individuals often face a similar bind:

- They **seek connection**—especially with equals.
- But the more intellectually gifted the gathering, the more **ideological clashes, ego tension**, and **emotional reactivity** arise.
- The result is a peculiar **loneliness among the brilliant**—not for lack of company, but lack of resonance.

This produces what could be called **existential solitude**—the painful awareness that while others may surround you, **very few will meet you at depth**.

---

True kinship for the intelligent often comes not in numbers, but in rare alignments of soul and mind.

## Brilliance as Burden and Beacon

To be highly intelligent in a society allergic to difference is to walk a tightrope:

- **Shine too brightly**, and you may be blinded or burned.
- **Dim your light**, and you betray your own nature.

Yet within this pain lies possibility. If society can learn to **tolerate discomfort, prize thoughtfulness, and protect the nonconforming mind**, it can access **transformative potential** that resides at the margins.

### And for the intelligent individual:

Understanding this social dynamic can bring comfort. You're not broken—you're just ahead of your time. **And time, eventually, catches up.**

What Trees Will You Plant? (Thinks Out Loud Episode 380)

# V. Solitude as a Fertile Ground for Creation

## Conclusion First:

Solitude is not a void—it is a vessel. For the intelligent and the creative, solitude offers what society rarely does: uninterrupted time, psychic quiet, and cognitive space to think deeply, feel authentically, and create meaningfully. Throughout history, periods of solitude have seeded revolutions in science, literature, philosophy, and art. To neglect solitude is to risk creative sterility; to embrace it is to unlock one's fullest potential.

## 1. Space for Deep Work: Cultivating the Flow State

In solitude, the mind is finally free to engage in **deep work**—a concept popularized by Cal Newport that refers to focused, meaningful work requiring intense concentration.

- Social environments are plagued by **interruptions, expectations, and noise**—physical and mental.
- Solitude acts as a **cognitive sanctuary**, allowing the individual to **enter flow states**—those moments where time dissolves and one is fully immersed in thought or creation.

### Historical examples abound:

- **Isaac Newton**, forced into solitude by the Great Plague of 1665, produced many of his foundational theories in math and physics during this “miraculous year.”
- **Nikola Tesla** credited many of his inventions to visions that came to him during periods of self-imposed isolation.
- **Henry David Thoreau**, in retreat to Walden Pond, wrote not just a book, but a blueprint for philosophical independence.

In each case, it was not merely loneliness—it was **solitude directed inward**, toward **creative transformation**.

## 2. Creative Silence: Listening Beyond Noise

Silence is not an absence—it is a medium. Like the blank canvas that makes painting possible, **silence makes creativity audible**.

- The intelligent mind often operates in layers—processing not just surface facts, but also patterns, metaphors, contradictions, and emotional nuances.
- **Social chatter drowns this subtle signal**. In solitude, that quiet inner voice becomes discernible.
- Neuroscience shows that the **default mode network (DMN)**—the brain’s introspective system—is most active during silence and idleness. It’s responsible for **daydreaming, reflection, and creative problem solving**.

In the silence of solitude, what was formerly noise becomes **insight**.

Creative silence is not laziness; it’s the **gestation period** of great thought. In solitude, the mind is allowed to **marinate in its own questions**, free from the pressure of social immediacy.

## 3. Time for Inner Dialogue: The Forge of Original Thought

---

The mind needs solitude not just to create, but to **think originally and integrate authentically**.

- Society often enforces **consensus thinking**—safe ideas, recycled beliefs.
- Solitude gives space to **ask uncomfortable questions**, consider contradictory viewpoints, and **synthesize personal truths**.
- This is the site of **inner dialogue**—a term used by Carl Jung and Rainer Maria Rilke to describe the mind's conversation with itself.

Insight is not delivered; it is earned—through rumination, pattern recognition, and philosophical interrogation.

Inner dialogue is what separates **knowledge** from **wisdom**. Many intelligent individuals may *know* much from books, media, and education—but **it is only in solitude that this knowledge becomes fully theirs**.

## Solitude Is the Workshop of Genius

To be creative is to **step outside the noise of culture**, to **walk into one's own forest**, and to return bearing fruit.

Solitude:

- Provides the **focus for breakthroughs**.
- Offers the **silence necessary for intuition**.
- Allows the **dialogue that refines thought into originality**.

In a world obsessed with connection, perhaps the most radical act is disconnection—not as escapism, but as **reconnection with the self**.

As Blaise Pascal once wrote,

“All of humanity's problems stem from man's inability to sit quietly in a room alone.”

And yet, that room—properly embraced—is a cathedral.



## VI. The Dangers of Isolation: When Solitude Turns Toxic

### Conclusion First:

Solitude is a double-edged sword. While it can be the cradle of genius and creativity, if untethered from human connection, it may decay into loneliness, cynicism, and psychological unraveling. The same introspective mind that crafts brilliant insights is also susceptible to rumination, despair, and detachment. To walk the path of solitude wisely, one must vigilantly guard against isolation, not glorify it blindly.

### 1. Loneliness vs. Chosen Solitude: The Vital Distinction

At first glance, solitude and loneliness may seem like twins. In truth, they are **philosophical opposites**.

- **Solitude** is *chosen, empowering, and enriching*—a conscious retreat into one's inner world.
- **Loneliness** is *uninvited, depleting, and disorienting*—a gnawing sense of disconnection from others, even when surrounded by people.

---

For highly intelligent individuals who often crave depth and meaning, this line can blur. When meaningful connection is **scarce or unavailable**, solitude—no matter how willfully chosen—can **slip into emotional starvation**.

It is not lack of love, but lack of friendship that makes unhappy marriages—and lives.

*Nietzsche*

Intelligence does not immunize one from emotional pain. In fact, it may **amplify it**, as perceptive minds are often **painfully aware of their own disconnection**.

## 2. Psychological Risks: When Depth Becomes a Pit

Solitude, when left unchecked, can devolve into **self-destructive mental loops**.

Common patterns include:

- **Cynicism** — A defensive posture adopted when connection feels impossible. The individual begins to **despise the crowd** not out of superiority, but **out of bitterness**.
- **Nihilism** — When one stares too long into the void of existence, meaning itself can seem arbitrary or false. Nietzsche warned of this abyss, but himself was consumed by it.
- **Mental Health Challenges** — Depression, anxiety, and dissociation can quietly creep into isolated lives. The internal world becomes **an echo chamber**, lacking friction, feedback, or grounding.

Research in neuroscience confirms that **prolonged social deprivation** can lead to changes in brain chemistry. **Oxytocin and serotonin levels drop**, while **cortisol spikes**, increasing stress and cognitive decline.

Even introverts and deep thinkers **require periodic emotional nourishment**—a friend, a mentor, a shared moment of understanding.

## 3. Historical Examples of the Downward Spiral

Even the most brilliant minds have fallen prey to the darker side of isolation.

- **Friedrich Nietzsche**, a towering philosophical genius, ended his life in **insanity**, likely brought on by a combination of physical illness and profound emotional detachment. His later writings veered toward **paranoia and cosmic despair**.

- **Franz Kafka**, author of *The Metamorphosis*, lived a life of almost constant alienation. His letters are filled with longing, self-loathing, and existential dread. He died young, with much of his work unpublished and unread.
- **Emily Dickinson**, one of the greatest American poets, withdrew increasingly into solitude. While her creativity bloomed, her mental and physical health declined. She rarely left her room in her later years, and her correspondence reveals growing anxiety and despair.

Each of these minds illuminated the world—but at great personal cost. Their solitude may have **given us genius**, but it also **took from them peace**.

## Solitude Must Be Anchored in Connection

Solitude is essential, but never sufficient. Like oxygen, it sustains—but in isolation, even oxygen can become **a suffocating prison**.

To thrive in solitude:

- **Regularly touch base with humanity**—through friendships, community, service, or even correspondence.
- **Use solitude as a bridge to creativity, not a wall from the world.**
- **Don't romanticize withdrawal**—recovery, not avoidance, should be the aim.

We are each of us angels with only one wing, and we can only fly by embracing one another.

Luciano De Crescenzo



## VII. Finding Balance: The Art of Socializing Without Losing Oneself

### Conclusion First:

True fulfillment lies not in total withdrawal nor in blind immersion, but in *curated connection*—the art of navigating society on your own terms. Intelligent individuals can preserve their inner sanctity while still engaging with the world. It's not about fitting in; it's about *creating or finding spaces where you don't have to pretend*. Balance is not compromise—it is *mastery of boundaries, purpose, and authenticity*.

### 1. Strategic Social Engagement: Connection Without Conformity

Not all relationships are equal, and for the thoughtful or intellectually intense, *quality trumps quantity*.

Rather than resisting all social interaction, the intelligent individual can **curate connection** in ways that are nourishing, rather than depleting.

- **Value-aligned communities:** Join or form spaces where depth is welcome—think tanks, philosophy cafés, writing residencies, research forums, spiritual retreats.

- **Choose friends who challenge your mind and open your heart:** Growth comes not just from solitude, but from encountering *other minds wrestling with truth*.
- **Drop the need for relatability:** Intelligent people often feel isolated because they're trying to dumb down or adjust their natural inclinations. Instead, look for the *already rare, already kindred*.

If you are lonely when you're alone, you are in bad company. — Jean-Paul Sartre

But the right company? It doesn't dilute you. It *clarifies* you.

## 2. Mastering Philosophical Detachment: Don't Take Society Personally

Even when operating within society, one need not become *of* it.

- **Practice observational detachment:** Learn to *witness* the dance of superficiality without being pulled into it emotionally.
- Accept that not every conversation must be profound. Mundane exchanges need not be seen as threats—they are **just social rituals**, not soul betrayals.
- **Maintain your depth internally**, even when external settings seem shallow.

This is not apathy—it is *inner sovereignty*.

The intelligent mind can remain clear-eyed, kind, and connected without surrendering its values. This is what Eastern traditions call *being in the world, but not of it*.

## 3. Authenticity and Selective Vulnerability: Be Real, Not Raw

One of the tragedies intelligent people face is the feeling that they must perform normality to be accepted. The opposite is true: **authenticity magnetizes aligned people**, even if it first repels the masses.

- **Drop the act:** Speak how you speak. Think how you think. Those meant for you will lean in.
- **Be selectively vulnerable:** Share inner thoughts and ideas with those who *earn* access, not with those who demand it.
- **You do not need to be understood by all**—only by the few who matter.

Authenticity is not oversharing. It is *alignment without apology*.

## 4. Create Safe Spaces for Expression: Don't Just Find—Build

If you can't find a room where you belong, **build it.**

- Start a **reading circle** around philosophy, psychology, or poetry.
- Host a **discussion group** where ideas—not identities—are debated with curiosity.
- Create **no-small-talk** **dinner salons** where participants explore topics of meaning.
- Design **safe zones**—physical or virtual—where introspective minds can be themselves without camouflage.

Community, for the intelligent, must be **intentional**. The world rarely offers it. It must be *crafted like an artwork*, with care, boundaries, and courage.

### A Middle Way Between Isolation and Assimilation

Finding balance doesn't mean giving up solitude. It means **giving it context**—knowing when to retreat and when to return. When solitude is laced with community, it becomes *wisdom*. When intelligence meets humility and authenticity, it creates not just insight—but *resonance*.

What is to give light must endure burning. — Viktor Frankl

Let your mind burn bright—but find hands to warm near it, not just walls to protect it.



## VIII. Conclusion: Solitude Is Not Absence It Is Presence of Self

### Conclusion First:

Solitude, far from being a void, is a sanctuary—a dynamic presence of thought, creativity, and self-awareness. For the intelligent mind, solitude is not a retreat from the world but a return to what is real, original, and meaningful. It is not misanthropy—it is a conscious resistance to noise, to performance, and to mediocrity. And in this quiet resistance, the seeds of beauty, truth, and innovation are sown.

### Key Takeaways

- **Intelligent minds aren't anti-social—they're often anti-superficial.**  
Their withdrawal is not rejection, but discernment. They seek *depth*, not distance for its own sake.
- **Solitude allows for focus, originality, and clarity.**  
The most transformative ideas often arrive in stillness. Without solitude, we risk becoming echoes of louder voices.

- **Socialization must be deliberate, not default.**

Connection, when chosen wisely, enriches solitude rather than disrupting it. It becomes a *symphony*, not noise.

- **Self-understanding is the first step to social resilience.**

Those who know themselves can choose their battles, their companions, and their silences with grace.

## Action Steps for Readers

This isn't just a philosophy—it's a **practice**. If you resonate with this article, try the following:

### • **Reframe solitude as a creative necessity, not a social defect**

Just as sleep restores the body, solitude restores the mind.

### • **Journal your thoughts regularly**

Explore your inner landscape. Write not just to remember, but to discover.

### • **Find or create authentic spaces**

Start a philosophy circle. Create a silent book club. Attend deep-dialogue events. Your tribe may be quiet—but it exists.

### • **Practice being alone without being lonely**

Try a weekend digital detox. Visit a museum solo. Sit in a park with just your thoughts. *Watch what shows up.*

## Participate and Donate to MEDA Foundation

At **MEDA Foundation**, we don't just advocate for inclusion—we *create it*. Whether you're neurodivergent, quietly gifted, or simply someone who thinks differently, we believe there's a place for your mind, your vision, and your silence.

We work to:

- Support **neurodiverse individuals** with training and employment.
- Build **communities of authenticity**, not conformity.
- Empower **solitary minds** with tools for sustainable livelihoods.

Your contribution can light up someone's inner world—and help them carry it into society with confidence.

---

â?ˆ” **Participate. Volunteer. Mentor. Contribute. Donate.**

ö??? [www.MEDA.Foundation](http://www.MEDA.Foundation)

## Book References & Suggested Readings

To go deeper, we recommend these seminal works:

- **Arthur Schopenhauer** â?? *Essays and Aphorisms*
- **Friedrich Nietzsche** â?? *Thus Spoke Zarathustra, Beyond Good and Evil*
- **Carl Jung** â?? *Modern Man in Search of a Soul*
- **Susan Cain** â?? *Quiet: The Power of Introverts in a World That Canâ??t Stop Talking*
- **Aldous Huxley** â?? *The Perennial Philosophy*
- **Viktor Frankl** â?? *Manâ??s Search for Meaning*
- **Cal Newport** â?? *Deep Work*

These thinkersâ??each in their own solitudeâ??have given generations the tools to understand themselves, and by extension, the world.

### CATEGORY

1. Ancient Wisdom
2. Entrepreneurship - Training
3. Self Learning
4. Skills Development and Vocational Training
5. Training, Workshop, Seminars

### POST TAG

1. #AuthenticConnections
2. #AuthenticSelf
3. #CognitiveOverload
4. #Creativesolation
5. #DeepThinking
6. #DeepWork
7. #EmbraceYourUniqueness
8. #Existentialsolation
9. #GeniusAndSolitude
10. #InnerDialogue
11. #IntellectualFreedom
12. #IntellectualRebellion

13. #IntellectualSolitude
14. #IntrovertPower
15. #LonelinessVsSolitude
16. #MedaFoundation
17. #MentalClarity
18. #MentalFreedom
19. #MentalHealthAndCreativity
20. #Neurodivergence
21. #Nietzsche
22. #PhilosophicalDetachment
23. #PhilosophicalSolitude
24. #PhilosophyOfLoneliness
25. #PowerOfIntroverts
26. #PsychologyOfSolitude
27. #QuietRevolution
28. #Schopenhauer
29. #SchopenhauerSolitude
30. #SelfDiscovery
31. #SocialConformity
32. #SocialEngagement
33. #SolitudeAndIntelligence

## Category

1. Ancient Wisdom
2. Entrepreneurship - Training
3. Self Learning
4. Skills Development and Vocational Training
5. Training, Workshop, Seminars

## Tags

1. #AuthenticConnections
2. #AuthenticSelf
3. #CognitiveOverload
4. #CreativeIsolation
5. #DeepThinking
6. #DeepWork
7. #EmbraceYourUniqueness

8. #ExistentialIsolation
9. #GeniusAndSolitude
10. #InnerDialogue
11. #IntellectualFreedom
12. #IntellectualRebellion
13. #IntellectualSolitude
14. #IntrovertPower
15. #LonelinessVsSolitude
16. #MedaFoundation
17. #MentalClarity
18. #MentalFreedom
19. #MentalHealthAndCreativity
20. #Neurodivergence
21. #Nietzsche
22. #PhilosophicalDetachment
23. #PhilosophicalSolitude
24. #PhilosophyOfLoneliness
25. #PowerOfIntroverts
26. #PsychologyOfSolitude
27. #QuietRevolution
28. #Schopenhauer
29. #SchopenhauerSolitude
30. #SelfDiscovery
31. #SocialConformity
32. #SocialEngagement
33. #SolitudeAndIntelligence

**Date**

2026/04/05

**Date Created**

2025/04/12

**Author**

rameshmeda